

Combination Laser Tachometer and Vibration Meter

Measure rpm, linear surface speed, acceleration, velocity, and displacement

- Large LCD with characters on display reverse direction depending on contact, photo, or vibration mode
- Included Windows® 95/98/NT/2000/XP compatible software allows the downloading of readings to PC for further analysis

Tachometer Features

- Laser sighting provides noncontact distance measurements of up to 4.9 ft (1.5 m)
- Stores last, min, and max readings

Vibration Meter Features

- Remote vibration sensor with magnetic adapter on 39" (1 m) cable
- Wide frequency range of 10 Hz to 1 kHz
- RMS or peak value measurement modes
- Manual, auto store, and recall up to 1000 readings
- Data hold freezes displayed readings
- Auto shut off

SPECIFICATIONS	
Tachometer	
Photo	10 to 99,999 rpm
Contact	0.5 to 19,999 rpm
Surface speed	0.2 to 6560 ft/min (0.05 to 1999.9 m/min)
Accuracy	±0.05% + 1 digits
Vibration meter	
Acceleration	656 ft/s ² , 200 m/s ² , 20.39 g
Velocity	7.87 in/s, 200 mm/s, 19.99 cm/s
Displacement	0.078 in, 2 mm
Resolution	1 ft/s ² , 0.1 m/s ² , 0.01 g; 0.01 in/s, 0.1 mm/s, 0.01 cm/s; 0.001 in, 0.001 mm
Accuracy	±5% + 2 digits
Dimensions (W x H x D)	3" x 7 ³ / ₈ " x 1 ¹³ / ₁₆ " (76 x 188 x 47 mm)
Power	Four AA batteries

What's included: Remote vibration sensor, magnetic mount, cone tip and flat tip wheels for linear surface speed or rpm, reflective tape, software with cable, hard carrying case, and four AA batteries.

Catalog No.	Model No.	Description
TS-54511-02	461880	Combination tachometer and vibration meter
Accessories		
TS-87712-62	461937	Spare reflective tape. 10 strips
TS-09386-01	—	Replacement batteries, AA. 4/pkg
TS-17060-00	—	NIST-traceable calibraton with data for tachometers
TS-17111-66	—	NIST-traceable calibraton with data for vibration meters

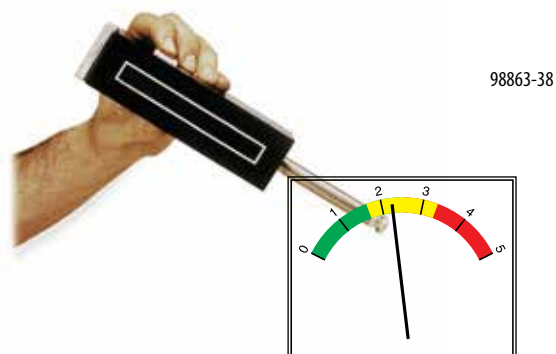


54511-02

Bearing Condition / Vibration Indicator

Tests bearings, gears, and machinery

The unit's color-coded meter provides a reading from the specially designed probe tip when it is placed on the bearing cap of the machine being measured and the bright orange "TEST" button is pressed. Relative bearing condition is indicated by a red, yellow, green scale and a "0 to 5" reading. A 9 volt battery will give approximately 120,000 bearing test readings. This unit is for use with equipment running from 1800 to 3600 rpm.



98863-38

What's included: 9 V battery.

Catalog No.	Model No.	Description
TS-98863-38	53254-2	Bearing condition indicator
Accessories		
TS-09386-04	—	Replacement batteries, 9 V. 4/pkg
TS-17111-66	—	NIST-traceable calibration with data